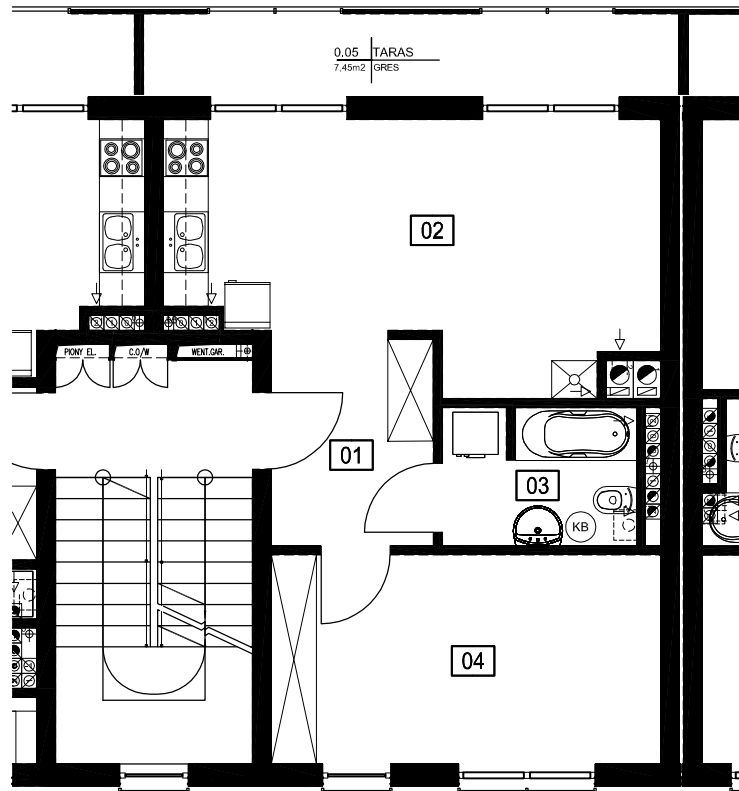
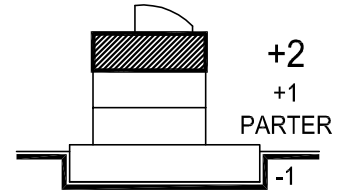
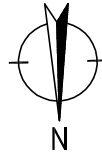
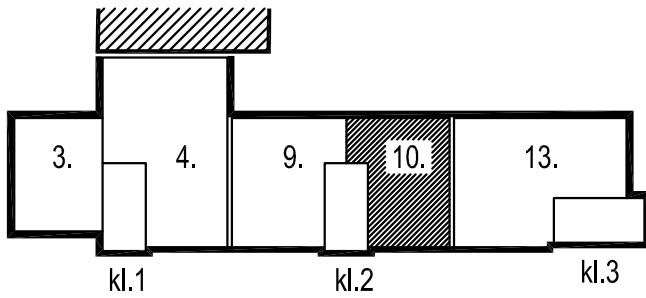


ul. Beskidzka



SPIS POMIESZCZEŃ		
NR	NAZWA POM.	PPOW
01	HOL	6.04
02	SALON Z ANEKSEM KUCH.	20.14
03	ŁAZIENKA	4.61
04	POKÓJ	14.24
		45.03

Powierzchnia 45,03 m<sup>2</sup>

Mieszkanie nr

Piętro 2  
Klatka nr 2

10